

CONNECTING WILD SPACES + CREATING HAPPY PLACES

# WOOD RIVER LAND TRUST

SUMMER 2024



WOOD  
RIVER  
LAND  
TRUST



- PROTECTING LAND  
Colorado Gulch Expansion  
and Corral Farms

- RECONNECTING &  
RESTORING  
Warm Springs Preserve  
and Elkhorn Creek

- DELIVERING ON OUR  
PROMISE OF PERPETUITY  
Stewardship, Accessibility,  
and Engagement

BOARD OF DIRECTORS

Roland Wolfram - Chair  
Karen de Saint Phalle - Vice Chair  
Barry Bunshoft - Secretary  
Mark Ullman - Treasurer  
Mary Bachman  
Jim Barnes  
Kathleen Bean  
Victor Bernstein  
Jeff Johnson  
Trish Klahr  
Elise Lufkin  
Nick Miller  
Bob Ordal  
David Perkins  
Jeff Seely  
Jim Speck  
Gayle Stevenson  
Dave Woodward

ADVISORY COUNCIL

David Anderson  
Ed Cutter  
Ranney Draper  
Susan Flynt  
Jack Kueneman  
Kathie Levison  
Sue Orb  
Rebecca Patton

STAFF

Scott Boettger  
*President*

Amy Trujillo  
*Executive Director*

Meghan Christie  
*Development Specialist*

Erin Dorr  
*Office Administrator*

Molly Goodyear  
*Communications Specialist*

Courtney Jelaco  
*Director of Donor Relations*

Cory McCaffrey  
*River Program Director*

Jori McCune  
*Conservation Specialist*

Ben Majsterek  
*Stewardship Coordinator*

Cece Osborn  
*Community Planning Director*

Chad Stoesz  
*Land Protection Specialist*

Brandee Smith  
*Finance and Operations Manager*

Keri York  
*Lands Program Director*



Dear Wood River Land Trust Community,

It is with mixed emotions that I share the news of my retirement as President and Founding Executive Director of the Wood River Land Trust after an incredible 27-year journey. It has been an honor and privilege to lead this organization and witness its growth and success.

Starting and growing an organization is akin to navigating the exhilarating rapids of a river. It requires a unique set of skills, unwavering courage, and the ability to adapt to the ever-changing currents. Throughout my tenure, I have embraced the mantra "read and run," which encapsulates the essence of our journey.

Just like skilled whitewater rafters, we faced challenges head-on, carefully assessed the currents of change, and made strategic choices that propelled us forward. We built a culture of unity and collaboration, valuing the power of connections and celebrating our collective achievements.

As I pass the torch, I do so with immense pride in our transformative impact on the Wood River Valley. Together, we have shown that with dedication, passion, and a willingness to embrace change, we can conquer any rapid that comes our way.

I am forever grateful to my incredible team for their unwavering support. It is your unwavering commitment and hard work that has driven our success and made the Wood River Land Trust the force it is today.

As I embark on this new chapter in my life, I am filled with excitement for what lies ahead. I have no doubt that under new leadership, this organization will continue to thrive, preserving and protecting the natural beauty of the Wood River Valley.

I would like to leave you with a quote that has inspired me throughout my tenure: "read and run." Let these words serve as a reminder that by embracing the adventure, embracing the rapids, and embracing the unknown, we can achieve remarkable things.

Thank you for being part of this extraordinary journey. Together, we have made a lasting impact on our community and the environment we hold dear.

My best,

Scott Boettger  
President and  
Founding Executive Director



Scott and his son, Gunner in Tappan Falls rapid Middle Fork of the Salmon River 2017

A LETTER FROM THE

## EXECUTIVE DIRECTOR



This year, we're celebrating a significant milestone: the 30th anniversary of the founding of the Wood River Land Trust. As our board and staff reflect on three decades of conservation achievements, we are filled with a deep sense of pride and gratitude for the impact we've been able to make with our community.

Too often we can get pulled into the day to day grind of deadlines, meetings, and the next project. But when I visit our preserves, walk along the river, and see people enjoying these places on a daily basis, I am humbled by the impact of our work together. I hope you'll join me this summer in visiting a preserve and sitting for a moment to reflect on how all this has come to be – just regular people from our community coming together time and again to create a better future.

As we look back on what's been accomplished, we also look ahead with determination and optimism. The challenges facing our Valley are real. How we grow affects our wildlife corridors, the health of our river, and our access to natural areas. The things we hold dear – our foothills and mountains, rivers and streams, and our connection to each other – are at risk if we forget how interconnected we are with the land and water we depend on and love. But we remain optimistic, because if the past 30 years have shown us anything, it's that through persistence, hard work, and partnership, we can make a difference.

Our work continues to be focused on three key areas:

- Protecting and Maintaining Wild Spaces and Happy Places,
- Restoring Systems and Connections, and
- Delivering on our Promise of Perpetuity.

In this newsletter you'll see how your support is helping do all this, in multi-faceted ways. Our traditional land protection efforts are going strong. With your help, we closed on two new projects this winter. That's two more important properties permanently protected. In addition to our tried and true work, you'll read about our new tool for conservation: our Community Planning program. You'll get updates on projects that are restoring creeks to their floodplains, and innovative partnerships aimed at helping imperiled pollinators. And, you'll read about the work being done to make sure the special places we protect in perpetuity are healthy and remain available to all members of our community.

As we celebrate our past achievements and look to the opportunities that lie ahead, we extend our heartfelt gratitude to each and every one of you who has contributed to the success of the Land Trust. Your support, dedication, and passion have been the driving force behind our conservation efforts. We are grateful for your continued partnership.

Thank you for being an important part of this journey.

Amy Trujillo, Executive Director

# WOOD RIVER LAND TRUST

# 30 YEARS

CONNECTING WILD SPACES  
CREATING HAPPY PLACES



Wood River Land Trust Board, 2000

## CELEBRATING 30 YEARS OF CONNECTING WILD SPACES + CREATING HAPPY PLACES

*This June, the Wood River Land Trust marks an extraordinary milestone—30 years of conservation and community enrichment in the Wood River Valley.*

Founded in 1994 by a small group of concerned citizens, the Wood River Land Trust has become an essential part of our community. Together, we have created and opened 16 public nature preserves that provide the backdrop to our daily lives; protected almost 28,000 acres of wildlife habitat and working lands; restored over 19 miles of rivers and streams; and fostered a love for natural habitats and open spaces to ensure these places are cherished for generations to come. As we celebrate the achievements in our past, we're also looking toward the future, focusing on continued preservation accomplishments and commitment to the Wood River Valley.

We couldn't have done any of this work without committed people like you. We're looking forward to celebrating with you this summer, as we continue looking toward the next 30 years of conservation.

Please join us at these upcoming events this year, as we celebrate what is possible when our community comes together to protect the places we love.

## Celebrating our Accomplishments



### 30th Anniversary Events

**Boxcar Bend Work Party**  
JUNE 15TH, 2024

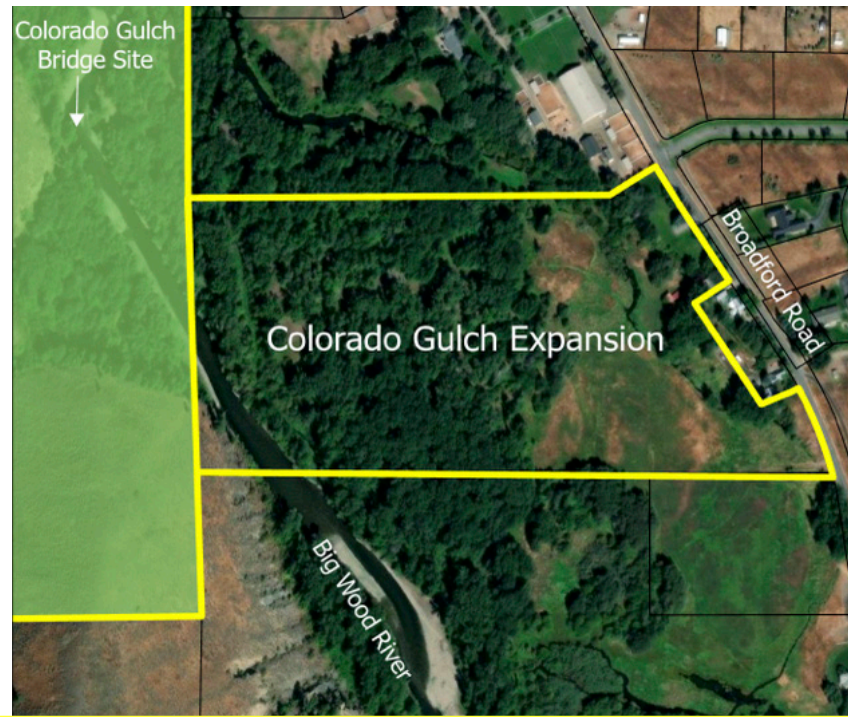
**Weed Warrior Day  
at Howard Preserve**  
JUNE 28TH, 2024

**Hailey Rocks! Summer Music  
Series**  
JULY 11TH, 2024

**Big Wood River Clean Up**  
SEPTEMBER 21ST, 2024

**Howard Preserve Anniversary  
Picnic**  
SEPTEMBER 21ST, 2024

**Think Globally, Act Locally  
Speaker Series 2025**  
JANUARY-MARCH 2025



## Expanding the Hailey Greenway

*This spring, thanks to the generosity and support of our community, the Wood River Land Trust was able to add over 30 acres to the Colorado Gulch Preserve.*

Through your generosity and unwavering commitment to conservation, we have been able to secure this important addition to the Hailey Greenway, ensuring its preservation for all of us and for future generations.

Our focus now turns towards evaluating the best opportunities for enhancing the habitat as well as the potential for trails and access. Over the coming year, we will be closely observing the land through different seasons, gathering valuable insights to inform our management plan. From winter wildlife closures to carefully directing trails through less sensitive areas, we are dedicated to implementing management strategies that balance the protection of this habitat for wildlife with providing access to our community.

As we celebrate this momentous occasion, we invite you to join us on the journey ahead. Whether through volunteering, spreading the word, or contributing to future projects, your support is invaluable in ensuring the long-term preservation of this property and other treasured landscapes throughout the Wood River Valley.

Thank you to all who made this possible!

# PRESERVING CORRAL FARMS

## Another Piece of the Puzzle

*When Susan Graham approached us with the vision of donating a conservation easement to protect her family's farm in Camas County in perpetuity, we recognized the opportunity to make a lasting impact on the landscape. Spanning 160 acres of prime farmland, Corral Farms is our latest conservation success, protecting another piece of the rich agricultural heritage and ecological diversity of our region.*

The significance of Corral Farms extends far beyond its picturesque vistas and fertile soils. Situated near the Centennial Marsh Wildlife Management Area, a designated Important Bird Area, this property plays a role in providing habitat for migratory birds and other wildlife. By protecting farmland from development near the Centennial Marsh, we ensure that vital migration routes remain open, safeguarding biodiversity and ecological resilience.

Corral Farms serves as a key link in a network of wildlife migration corridors identified by Idaho Department of Fish and Game (IDFG), providing essential summer habitat for elk and mule deer and serving as a vital route for pronghorn and elk migrations. These corridors are essential for maintaining healthy populations of wildlife and preserving the natural rhythms of our ecosystems, as discussed in the March installment of our 2024 **“Think Globally, Act Locally” Speaker Series with IDFG’s Sierra Robatcek.**

A conservation easement on Corral Farms represents more than just a legal agreement; it is a commitment to stewardship and sustainability for generations to come. By voluntarily restricting development on the property, Susan ensures that the property’s conservation values are protected forever. This easement, and others nearby, not only safeguard prime farmland and wildlife habitat, but also contribute to the long-term health and resilience of the Camas Creek watershed.

In the coming years, we will continue to pursue opportunities for protecting important lands and water throughout our region, ensuring that wildlife not only survive but thrive in healthy, vibrant habitats. Through strategic partnerships, community engagement, and a commitment to excellence in land stewardship, we continue to make strides toward achieving our conservation goals. Working with landowners like Susan, and supporters like you, we can protect the landscapes we love for generations to come.



# COMMUNITY PLANNING: BUILDING CAPACITY TO STEWARD A LIVABLE FUTURE

*As an area with convenient and extensive access to nature, Blaine County and its cities fall into what a growing body of research refers to as a Gateway and Natural Amenity Region – a “GNAR” community. In the wake of the pandemic, increased visitation and “amenity migration” overwhelmed historically small towns. Post-pandemic, GNAR communities like Blaine County are grappling with the socioeconomic effects of changed demographics, as well as the environmental effects of an increased population. Understanding the impacts of these changes on our natural resources, the Land Trust is launching a new Community Planning program. Land use planning is another tool available to us, to protect our open spaces and natural resources.*

## Amenity Migration: driven by a desire to get close to the natural world and outdoor recreation

In many places, the social impacts of increased visitation and amenity migration is playing out against a backdrop of environmental turmoil. Like the rest of the world, Idaho is feeling the pressures of climate change. Warming temperatures are diminishing our winters– triggering earlier snowmelts, lessening the capacity of the snowpack to store water through the hottest months of the year, and overall compromising our water supply. More frequent and intense drought and wet periods further stress the ecology of the Big Wood River basin.

Nearly two thirds of Idaho’s voters think that climate change will harm future generations, while 85% identified bigger and more frequent wildfires as a top environmental concern. Thankfully, 89% of Idaho’s voters stand with the Land Trust and other conservation organizations– they support conserving forests, farms, and wetlands that naturally remove pollution from the air. Climate action relies on solutions in the global effort to mitigate climate change by reducing emissions, as well as a local responsibility to adapt to the real, living conditions of climate change.

## Managing Growth for Conservation

The new Community Planning program at the Land Trust rests on an understanding of growth in the Wood River Valley, climate change in the region, and the importance of conservation to quality of life. After two years of community engagement – first with the wider community in 2022 and then with community partners across sectors in 2023 – the Land Trust is now publishing the scope, objectives, and approach of the Community Planning program. Most of all, the Land Trust seeks to draw the connection between community planning and local conservation objectives– that is to say, how community planning can build capacity to manage growth and steward a livable future.

### THE SCOPE

Based on feedback from the wider community, the new Community Planning program has identified five focus areas of priority and concern in the community:

**Habitat conservation:** The community cherishes Blaine County’s natural environment and access to open space. People recognize the ongoing need to protect wildlife and natural resources, restore the Big Wood River and its floodplain, and prepare for natural hazards linked to climate change. More than ever before, the community recognizes the risk of losing surrounding open space to new, sprawling development.

**Water availability:** With a changing climate, the valley worries whether there will be sufficient water for a growing community, the local food system and the Big Wood River’s ecosystem and fishery. Consistently, the community sees additional opportunities to reduce demand for water and manage usage conjunctively, across the region.

**Community housing:** Migration to Blaine County during the COVID-19 pandemic exacerbated the County’s longstanding housing challenges and created a crisis. At unprecedented levels, the market for housing remains profitable and drives new development. Yet, new market-rate housing doesn’t equate to housing for our local workforce and long-time community members–





much of the housing stock is unaffordable to them. Creative policy solutions are necessary to provide and protect housing for the people who keep the wheels of our community spinning.

**Transportation mobility:** The housing crisis and traffic congestion are closely tied in the Valley. The community is impacted by increasing length of work commutes into the Wood River Valley. With a legacy of supporting local transit services and active transportation facilities, the community voices support for sustainable transportation modes. Yet, data suggests that residents’ travel behaviors do not align with their stated values– Blaine County is largely car-dependent. The community supports walking, biking, and riding transit, as long as they can safely and conveniently get to where they need to go.

**Livability:** The community, especially long-time residents, is concerned about maintaining the “quality of place” that drew them to Blaine County. Residents say the values that underpin local life have been buffeted by growth and demographic changes. They also recognize the importance of shared spaces where people come together to enjoy nature, volunteer for community causes, and get to know each other. Our physical environment can be shaped to enhance social connectedness in Blaine County.

**Connection to our Work:** While three of the focus areas– habitat conservation, water availability, and livability – clearly connect to the mission of the Land Trust, the connection between transportation mobility, community housing, and conservation is more nuanced. How our community addresses transportation and community housing has direct effects on conservation. The connection is grounded in the principles of compact community design, and relies on transportation and housing objectives to counteract the forces that drive sprawling development. If communities are planned to allow for increased land use efficiency in smart places and incentivize sustainable modes of travel and community housing, our community is better positioned to conserve our surrounding natural beauty. Other benefits– like efficient use of natural resources, reduced emissions, and increased social cohesion– also result from compact development.

Our new Community Planning program exists to propel solutions that preserve our community’s cherished characteristics and prepare us for a livable future.

### THE APPROACH

With an inclusive, interjurisdictional, and cross-sector approach to Community Planning, the Land Trust seeks to build the community’s capacity to manage growth. The aforementioned challenges - shared amongst Gateway and Natural Amenity Region (GNAR) communities - are exacerbated by climate change and tangible to the whole community. By coalescing those who are dedicated to quality of life in the Wood River Valley– active citizens, engaged philanthropists, partner organizations, and our leaders in local city and county government– we can maximize the impact of the resources available to us. Altogether, we are better positioned to meet community needs with sustainable solutions. Without proactive management, GNAR communities risk becoming victims of their own appeal– losing the qualities that made them attractive in the first place.

### THE OBJECTIVES

The newly published program announcement - *Community Planning: Building Capacity to Steward a Livable Future* - outlines our scope of work across the five focus areas. The document describes the current conditions and fundamental dynamics of each focus area (Chapter 1: Community Profile). Chapter 2 highlights existing and overlapping policies already in place and set out by Blaine County jurisdictions, synthesizing them into a set of shared goals and highlighting where we can work together. The plan then establishes a framework for the new work of the Land Trust’s planning arm– one that emphasizes citizen engagement, data-driven solutions and coordination that transcends traditional boundaries.

*Photo credits: Opposite left, Gerry Morrison. Lower right, Michael Olenick.*

To download a copy of the plan, go to [www.woodriverlandtrust.org](http://www.woodriverlandtrust.org), or email our Community Planning Director, Cece Osborn, to learn more: [cece@woodriverlandtrust.org](mailto:cece@woodriverlandtrust.org).

# Behind the Scenes at Warm Springs Preserve

Warm Springs Preserve stands as a testament to community partnership. The City of Ketchum's purchase of the 65-acre Preserve along Warm Springs Creek in 2022, was only possible thanks to community support, and the community continues to be involved in shaping its future.

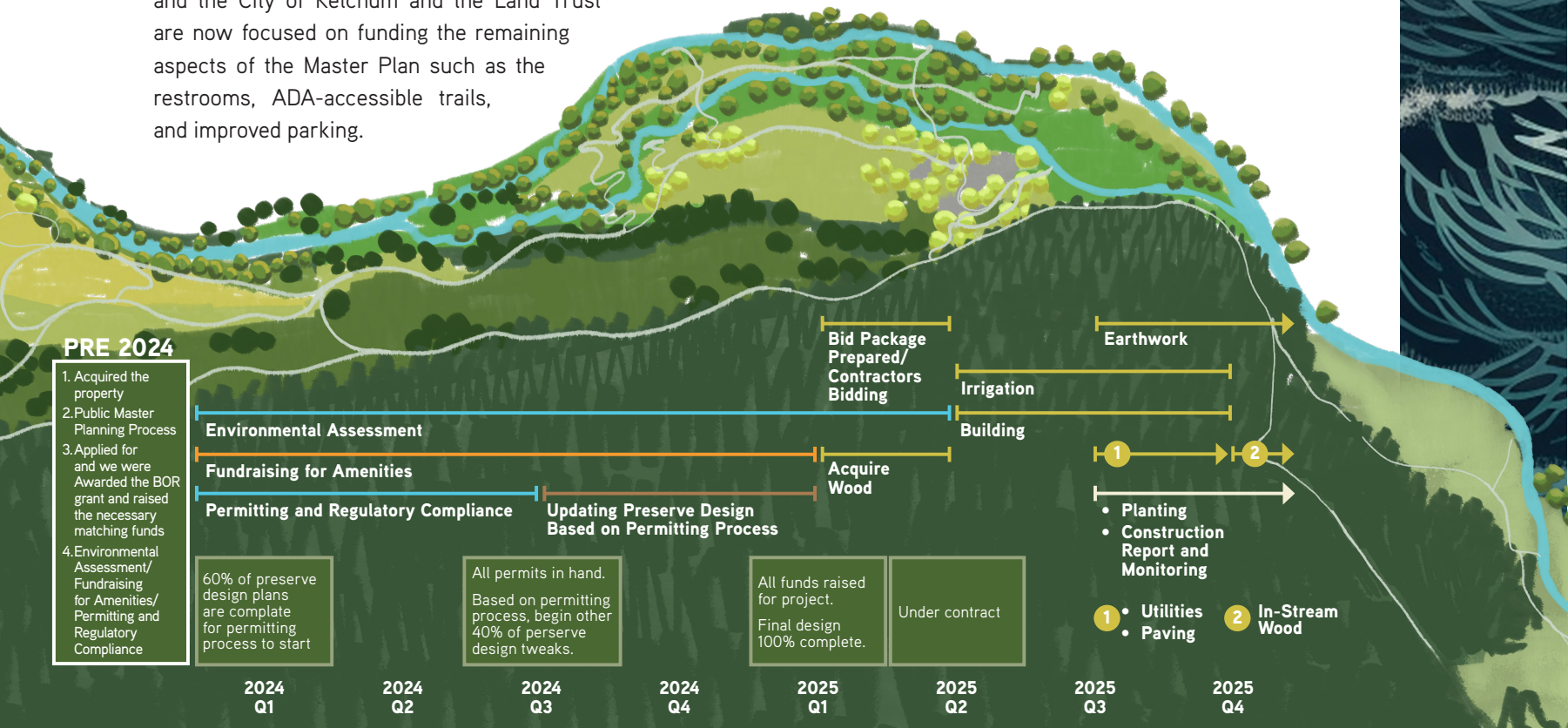
After acquiring the Preserve, the City partnered with the Wood River Land Trust to host a 9-month public Master Planning process to identify upgrades to infrastructure, amenities, and public access, and preserve and restore Warm Springs Creek. The final Master Plan was adopted in 2023, and was informed by the priorities outlined during the acquisition campaign, the expectations and limitations within the deed restrictions, and the community's feedback.

To date, approximately \$3 million has been raised through donations and grants to implement the full plan, but an additional \$1.5 million is needed to realize the project vision fully. The restoration project is fully funded, and the City of Ketchum and the Land Trust are now focused on funding the remaining aspects of the Master Plan such as the restrooms, ADA-accessible trails, and improved parking.

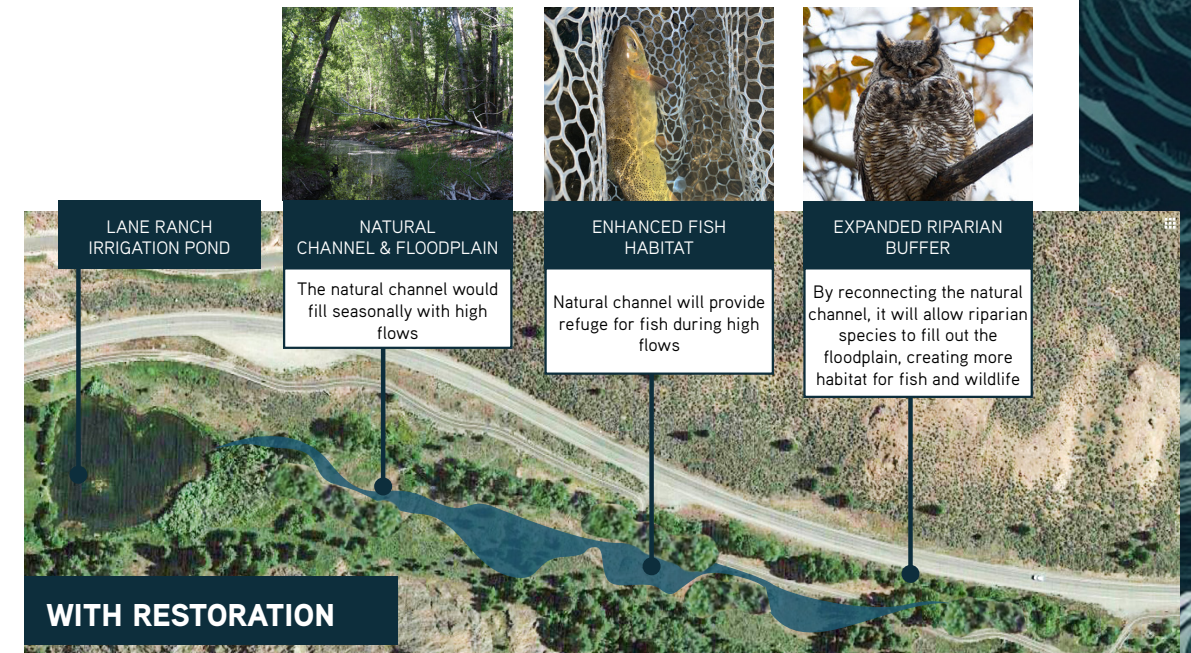
The timeline in the accompanying graphic describes where we are in this remarkable endeavor. In order to keep disturbance to the public to a minimum and reduce costs, all construction activity has been planned for 2025. But, there is plenty going on in the background in the meantime.

Engineering and design work continues this year, along with permitting and logistical coordination to explore connecting trails at the Preserve to other nearby systems. New disc golf baskets and Nordic ski trails have already been installed, with other amenities to follow in 2024. Major infrastructure work is scheduled to begin in spring 2025. While much of the work is behind the scenes, every task brings the project one step closer to fruition.

You can keep informed by signing up for our e-newsletter by emailing [info@woodriverlandtrust.org](mailto:info@woodriverlandtrust.org). As Warm Springs Preserve continues to evolve and thrive, it serves as a reminder of the profound impact that collective action can have in shaping our Valley's precious resources. Thank you to all who continue to support this project. Together we will achieve our vision of creating a vibrant, accessible, and sustainable natural space for our community that will endure for generations to come.



## Elkhorn Creek Enhancement Project



Elkhorn Creek is one of the important tributaries that feeds into the Big Wood River. These tributaries bring cool water to our river system and serve as refuge and rearing habitat for fish. Over the years, Elkhorn Creek has faced challenges, with its natural flow being disrupted by human intervention. There have been a number of restoration efforts over the years, the latest of which will continue connecting the creek to its historic floodplain.

The history of the Elkhorn Creek is intertwined with the story of human settlement in the valley. Once a meandering waterway, the creek was altered to accommodate human needs, one being a pond installed upstream of the Lane Ranch subdivision to aid irrigation. This modification, and others, diverted the creek from its original path, disrupting its natural flow and isolating it from its floodplain.

The Elkhorn Creek Enhancement Project aims to reestablish the creek's connection to its historic channel and floodplain at seasonal high flows. By cutting a notch in the berm and allowing the creek to access its natural course during high flows, we can revitalize the riparian corridor, and create more habitat for fish and wildlife. This restoration effort is a "win-win" scenario—it preserves the irrigation pond while enhancing the beauty and ecological value of the riparian corridor along the bike path.

This project is a good example of some of our simpler restoration efforts that can have an important impact. It's also a great example of our local community caring about the health of our rivers and watershed and taking action. This project is in partnership with the City of Sun Valley, and was generously supported by residents in the Lane Ranch neighborhood who understand the importance of this tributary and have a long history of stewardship for this part of the creek.

# Updates in Wood River Land Trust Preserves

*For 30 years, we have invited the community to our preserves, providing access to the river and our foothills that otherwise wouldn't exist. The places that people love today could very easily have been private homes or subdivisions that blocked access to the community.*

And while for years these preserves offered access with minimal infrastructure, the pressures on these places over the past few years have been immense. We saw dramatic increases in usage of the preserves during COVID when they were some of the few places that provided safe recreation opportunities close to home.

We found we needed more defined trails and infrastructure in order to maintain quality habitat and balance the numbers of people who visit the preserves. We also saw that, while our preserves provided such relief during COVID, there are people in our community who were not able to access them. This initiated our efforts to find ways to provide Universal Access in our preserves to ensure equitable access to the natural beauty of the Wood River Valley.

Universal Access trails are designed to accommodate people of all abilities, providing a welcoming space for everyone to enjoy the outdoors. In total, the Wood River Land Trust will be opening almost two miles of accessible nature trails to the public this summer.

**While we strive to upgrade the majority of existing trails to Universal Access status, it's important to note that not every trail can be converted due to environmental considerations. Trails located in the floodway, for example, pose challenges for continued maintenance.**

The Simons/Bauer Universal Access trail, set to be completed by summer, will connect Lions Park to the Mountain Humane campus. The trail features a stone aggregate tread surface and includes a boardwalk section to minimize disturbance to wetlands. A connection to Croy Creek Road will have its own unique trailhead, expected to be completed by the end of fall. An important note: this trail will be closed during winter months to protect wintering wildlife. This action is consistent with local efforts to minimize the impacts of recreation on wintering wildlife.

The accessible trails in Colorado Gulch are complete and open to the public. These trails will open up new opportunities for community members to explore and connect with nature. Springtime can create wet and muddy conditions for

trails and the Wood River Land Trust team will be doing our best to try to maintain the trail accessibility throughout the spring wet season.

As we continue to improve accessibility in our preserves, we remain committed to providing inclusive spaces where everyone can experience the wonder of the Wood River Valley. By following Universal Access standard guidelines and implementing thoughtful management strategies, we aim to ensure that our trails are enjoyed by all for generations to come.

We invite you to explore these newly accessible trails and witness firsthand the beauty of our preserved landscapes. Whether you are strolling along the Simons/Bauer Trail, or taking in the sights of Colorado Gulch, or visiting the boardwalk at the Croy Creek wetlands, we hope you will join us in appreciating the power of access and inclusion in nature.

**Universal Access trails adhere to specific standards to ensure accessibility for more individuals. These standards, including tread surface width, maximum obstacles height, and running grade limits, are essential for creating a safe and inclusive environment.**



## Enhancing Habitat for Native Bees and Insects

Since 2020, Wood River Land Trust has embarked on a number of stewardship projects aimed at enhancing habitat for our imperiled pollinators. Part of that effort has been to participate in an innovative project aimed at improving plant diversity on the edges of agricultural fields to enhance habitat for native bees and insects. Made possible through funding from Syngenta, Croplife America, and Simplot, this initiative represents a step forward in our commitment to conservation and biodiversity.

**A COLLABORATIVE EFFORT:** The 'Agricultural Pollinator Program' addresses the loss of habitat and diversity of food sources for native pollinating insects. By creating or enhancing pollinator habitat near agricultural fields, we aim to add diversity and seasonal availability of nectar resources for native insects, thereby bolstering their populations and supporting agricultural sustainability. Central to the

success of the Agricultural Pollinator Program is our collaboration with local producers, seed companies, Idaho Department of Fish and Game (IDFG), and the University of Idaho (UI). Through partnerships with these landowners and entities, we can harness collective expertise and resources to maximize the impact of the initiative.

**HOW IT WORKS:** In our third year of the Agricultural Pollinator Program, Wood River Land Trust will continue to engage with three landowners and four project sites ranging from Arco to the Bellevue Triangle. At each project site, WRLT and partners worked with the landowners to identify a plot of land next to an existing agricultural field that was appropriate for planting native plants. WRLT then worked with the landowners, seed companies, and IDFG to develop seed mixes that would succeed based on annual precipitation rates and soil characteristics. Planting native seed is more challenging than planting crops like hay and barley because each native plant species has seeds with different shapes, sizes, and weight. Working with the Blaine County Soil Conservation District, landowners, local farmers, and IDFG, we used specialized equipment to plant these native seeds.

In the years following planting, WRLT is working with UI to evaluate how native insects are using our planted pollinator habitat compared to farmed fields. We are doing this by collecting insects at each project site three times per year. Entomologists at UI are identifying the insects and providing the project team with data analyses. At the end of this year, we'll be able to make conclusions about insect use of our pollinator habitat over the three years. During our site visits, we are also completing plant surveys to determine which native plants are successful in these types of environments. This will help us create best practices and recommendations for future pollinator habitat plantings through this program, or others.

Through strategic partnerships, innovative research, and engagement with partners and landowners, we continue to enhance habitat for native bees and other pollinating insects, which have been on the decline. Your support allows us to not only protect land, but find new and innovative ways to support healthier habitats and ecosystems.



# THANK YOU TO OUR DONORS

## You make all of this possible!

### This list includes generous gifts made through March 31, 2024

#### IN HONOR OF

**In Honor of Lyn & David Anderson:** Christine Ferguson

**In Honor of David Anderson:** Kristin & Zach Krahmer

**In Honor of Mary Bachman:** Jane & Tom Oliver

**In Honor of Victor Bernstein:** Barbara Thrasher & Rick Koffey Thrasher Koffey Foundation

**In Honor of John Bossi:** Patricia Adams

**In Honor of Bernard & Kathy Brown:** Mollie Huppert

**In Honor of Vic & Sara Carlson:** Myla Sherburne

**In Honor of Ed Cutter:** Michelle & Spencer Cutter

**In Honor of Liz & Robb Duffield:** Marilyn Smith

**In Honor of Susan Giannettino & Jim Keller:** Wendy Favinger

**In Honor of Dayna & Marlen Gross:** Gay Walker

**In Honor of the Friendship Between Dick Hare & Bishop Craig Anderson:** Mindy & Bill Bush

**In Honor of Diane Kneeland:** Nancy & John Shepherd

**In Honor of Jack Kueneman:** Linda & Leonard Cohen

**In Honor of Kyle & Kathryn Livingston Family:** John Livingston

**In Honor of Ben Majsterek:** Shelley Majsterek

**In Honor of Bob Ordal:** Cheryl Parnell & Sam Dickerman

**In Honor of Connie Price:** Joan & George Parker

**In Honor of The Entire Schlessinger Family:** Phyliss & Leonard Schlessinger

**In Honor of Arlo & River Southwind:** Brittany Skelton

**In Honor of Barbara Thrasher:** Lucy & Stanley Tompkins

**In Honor of Amy Trujillo:** Barbara Thrasher & Rick Koffey Thrasher Koffey Foundation

**In Honor of David Woodward:** Kim Young & John Moragne

#### IN MEMORY OF

**In Memory of Jim Ashworth:** Ross A. Dinkelspiel & Michael Vigil

**In Memory of Francis K. Brossy:** Frederic A. Brossy Jr.

**In Memory of Judy Brossy:** Fred Brossy

**In Memory of Bartlett Burnap:** The Burnap Foundation, Inc.

**In Memory of Jim Grossman:** Sam & Peggy Grossman Family Foundation in the Arizona Community Foundation

**In Memory of Dick Hare:** Mindy & Bill Bush Michelle Gillern

Jodie & Dan Hare Marie & Jack Kueneman Barbara & John Lehman, The Lehman Foundation

**In Memory of Carroll Bacon Klahr:** Trish Klahr & Lee Meely

**In Memory of Hugh O'Riordan:** Gary Allen

Richard Burleigh Kay Hummel Guy Hurlbutt Kaye O'Riordan DeAnn Robb

**In Memory of Gloria Osberg:** Anne Marie Wick

**In Memory of Monty & Jackson:** Janice Payne

**In Memory of Greg Plowman:** Britton Kolar

**In Memory of Mr. William G. Tennille III:** James Deering Danielson Foundation

**In Memory of Bruce Alan Weber:** Marvin Weber

**In Memory of Dick Fosbury:** Holley & Chris duPont

**Gifts designated to Colorado Gulch Bridge In Memory of Dick Fosbury:** Betsy & John Ashton Tawni Baker & Jamie Trevino John Charney

Julie, Michael, Gardner & Lauren Cord Russell & Gemma Daggatt Jill & Wayne Donnelly Maria Dudunakis & Jerry Boesel

Chris Dunn Mary & Daryl Fauth Tom Frazer Susan Giannettino & Jim Keller Sara Donart Gorham Harry & Michelle Griffith Patricia Healey

Roberta & Tom Heinrich Mary Hogan & Dennis Botkin

Wendy & Jim Jaquet Lia & Dale Johnson Ginna & Ken Lagergren Susan Larson, Matt Larson, & Gary Kuchcinski Mary & Jim Speck Jennifer Montgomery Nina & Wayne Orvik Pam & Steve Rayborn Drs. Glen & Vicki Shapiro Becky & Pete Smith Betty & Robert Stone Blaine County Title Russell & Sharon Williams

#### Richard Carr Society \$50,000+

Anonymous

Lyn & David Anderson The Burnap Foundation, Inc.

Micki & Dan Chapin Cimino Family Foundation

David Cimino, Trustee Robert Cimino, Trustee

Ranney Draper Susan Flynt

Jami & Mark Grassi Hare Family Foundation

Jodie & Dan Hare Hollis Foundation

Kemmerer Family Foundation Lennox Foundation

Michael Mars The Ambrose Monell Foundation, Lili & Ambrose Monell

Tim Mott Nysether Family Foundation

Rebecca Patton & Tom Goodrich Spur Foundation

Diana & Steve Strandberg Whittelsey Family Charitable Trust

**Richard Carr Society \$20,000 – \$49,999**

Anonymous

Atira Conservation Mindy & William Bush

The Cabana Fund of the Oregon Community Foundation Robert S. Colman

Estate of Lila & Jack Corrock Cox Family Charitable Foundation

The Martine & Dan Drackett Family Foundation, Inc.

Chichester duPont Foundation Michelle Gillern

Peggy & Sam Grossman Family Foundation

HRH Foundation Shirley & Harry Hagey, Foundation Directors

Heart of the Rockies Initiative's Keep It Connected Program & Liz Claiborne & Art Ortenberg Foundation

Hemingway Foundation Judith Teller Kaye & David Kaye

The Landreth Family Fund Jeanne & Bill Landreth

Kathy & Wally Limburg Nancy Mackinnon & David Perkins

Perkins Charitable Foundation Rainbow Sandals Foundation

Jay Longley, Trustee Marc Longley, Trustee Sheila Plowman, Trustee

Betsy & Bob Reniers Lisa Ryan-Boyle & H. Perry Boyle Jr.

Jill & Tom Schriber SYZGY Foundation

Thrasher Koffey Foundation, Barbara Thrasher & Rick Koffey Walnut Fund

Julie Ann Wrigley Foundation The Vanderbilt Family Foundation

Sarah & Dave Woodward Kit Wright & Bob Ordal

Elisabeth & Steven Zahm

#### Richard Carr Society \$10,000 – \$19,999

Anonymous

Mary Bachman The Otis Booth Foundation

Debbe & Spike Booth The Conservation Fund

Ed Cutter Barbara & Paul Dali

Karen & Marc de Saint Phalle Wendy & James Drasdo

Feli Funke Elaine & John French Family Foundation

Nancy & John Goldsmith Family Foundation

Rita & George Golleher Elizabeth D. & Charles W. Goodyear Foundation

Jim & Mary Goodyear

Paula & George Hauer Foundation at the San Diego Foundation Heart of the Rockies Initiative Hotard Family Marcia Lee Kent Marie & Jack Kueneman The Lehman Foundation Josephine & William Lowe Alison & Jim Luckman The Makowski Trust Kathryn McQuade & Jon Manetta Kaye O'Riordan George Ohrstrom Stephanie & Nicholas Osborne Joyce W. Pearson Charitable Fund at Spur Community Foundation Jessica & Decker Rolph

Janie Rothschild Claire & Ellis Shamburger

Sue & David Squier Taylor & Mark Ullman

Vista Foundation Lynn Campion Waddell & Ted Waddell

Julia & Jeffrey Ward Jeanie Rabke Wyatt Family Foundation

Patti Zebrowski & Roland Wolfram

#### Richard Carr Society \$5,000 – \$9,999

Betsy Aalfs Helios Foundation

Laurie & Paul Ahern Lesley A. Andrus

Lacey Baker & Tad Smyth Kimberly & David Barenborg

Richard C. Barker Caroline & James Barnes

Trish & Brett Bashaw Carolyn & Donald Benson

Martina Bradford Dr. Elizabeth & Frank Breen

Manijeh & Arthur Brueggeman Bill Buchanan

Barry Bunshoft Nancy Cameron & Grahame Clark

The Corita Charitable Trust Maryanne & Dick Davis

Dyer Family Foundation Becky Follo & Tom Bentley

Jamie Forese Jana & Jeffrey Foushee

Cricket & Tony Frank Jodi & Gary Goodheart

Susan & Ronald Greenspan Barbara & Tod Hamachek

Grace Harvey & John Bailey Pamela Irby

Cecile & Trent Jones Kitty & Buck Jones

Susan & Ron Kase Land Trust Alliance

Gail Landis & Victor Bernstein Jean K Lafromboise Foundation

Andrea Laporte Lennox Foundation

Kathie A. Levison Jordan Lott

Pamela Lyford Susan & James McGuigan

Sylvia & Nick Miller Jane & Steve Mitchell

Ann Morris Carrie & Bill Morrow

Sally & Bill Neukom Harriet & Bruce Newell

Holbrook Newman & Geoffrey Isles The Ochsman Foundation

Esther Ochsman Judy & Don Oliphant

Sally & Marc Onetto Sue & Alex Orb

David Ordal Page Foundation

Gary Pape Karen Pederson & Dave Gwinn

Connie & Tony Price Julie & Steve Rendle

Larsen Fund Muffy Ritz

Frank Henry & Lois Elizabeth Rohay Irrevocable Trust Peter Toft, Trustee

Cindy & Richard Sanders Charles Schabacker

The Schooler Family Seely Family Fund

Drs. Glen & Vicki Shapiro Silver Creek Outfitters

Terry Ring Jessica & Jeff Sisson

Spur Community Foundation Gayle & Alan Stevenson

Susan Swig Peter & Cindy Urbanowicz

Joan & John Valaas Julie Weston & Gerry Morrison

Jessica Wetter & Wayne Foley Sally & James Will

Gina & John Wolcott Priscilla & Ward Woods

The Woods Foundation Barbara & Stanley Zax

#### Alturas Society \$2,500 – \$4,999

Serena Altschul Gwynn & Mitch August

Sara & Bill Barrett Jill & Steve Beck/Freshends

Kathy Lynn & Carl Bontrager Anne & Gary Borman

Calista & Tim Carter Amy & Nick Cole

Jill & Wayne Donnelly Christine Ferguson

Teresa Mary Gallant The Mary H & David A Gallant Fund

Karen & Ned Gilhuly E&H Humbly Bumbly Foundation

Javier Lopez Elise G. B. Lufkin

Morgan Masner Jeffrey Roberts

D&P Roberts Family Foundation Roy A. Hunt Foundation

Gail Severn

Huck & Paddle Emily Stoddard Jocelyn Tennille

Wood River Women's Foundation

#### Big Wood Society \$1,000 – \$2,400

Anonymous Marie Stanislaw & Stephen Abel

Barbara & Mark Acker Lisa Adam

Lois & Bart Adrian Karin & Jeff Armstrong

Betsy & John Ashton Barbie & Michael John

Corinne & Kirk Beardsley Shelley & Philip Belling

Clark Binkley David Borsook

Tania & Michael Cahill Margie Caldwell Cooper

Mary Ahern & John Chlebowski Charles Conn

Gary Cornick Russell & Gemma Daggatt

Paul Danielsen Susan Dechevrieux

Ross Dinkelspiel & Michael R. Vigil Carey & John Dondero

Lucy & John Douglas Edge Event Productions

Linda & Bob Edwards Elias Construction

The William & Martha Erickson Foundation Daralene & John Finnell

Happy Fitzgerald Sandra & John Flattery

Laurie & Ross Garber Gemunder Family Foundation

Susan Giannettino & Jim Keller Diedre & Larry Gordon

Sally & Gordon Granston Sue & Timothy Hamilton

Ellen Harris Sally & Greg Hartman

Francie & Michael Hawkey The Irene & Michael Healy

Charitable Fund Hecht 2008 Grantor Charitable

Lead Annuity Trust John Hill

Kathy Erickson & Bruce Hilyer Mary Ann & Tim Hogan

Wendy & Greg Hosman \* Kathleen Hughes & Bradley Bailey,

The Lighting Inc. Idaho Community Foundation

Beverly & Donald Jefferson Randi & John Kanellitsas

The Green-Karas Family Fund at Spur Community Foundation

The Kashen Family Fund at Spur Community Foundation

Becky Klassen & Buck Drew Kim & Mark Krouse

Robert Law Ginna & Ken Lagergren

Robert Law Maureen Lee & Mark Busto

Debra & Jack Levin

Carla & Don Lewis Valerie Logsdon & Al Pokorny

Darcy & Grant MacDonald Caren Frankel & Jory Magidson

Margie & Jon Masterson Colvin Matheson

The Matthias Foundation, Inc. Janet McCann

Willa & Jim McLaughlin The McMahon Family

Cindy & Tom Monge Kim Nalen

Linda Brower & Bill Nicholson Patsy & Mark Nickum

Jane & Tom Oliver Panache

Joan & George Parker Pesky Family Foundation

The Pommer Family Michelle & Tom Praggastis

Kent Pressman Shannon & David Presson

Paula & Jeff Pyatt Suzanne Strom-Reed & Duane Reed

Louisa & Brian Regan Laurie & Bill Reighley

Julia R. & Alan H. Richardson D&P Roberts Foundation

Bev & Brent Robinson Rachel Schochet

Valerie Newman Sills Francesca Scott Solomon

Vinton & Mimi Sommerville Nan & Larry Stone

Deborah Straiton & Erik Larson Louise & Trent Stumph

Sun Valley Outfitters Gusty Swift & Ethan Beck

Denise Swineford Kim Taylor & John Milner

Judy & Dave Threshie Lisa Tilney & Scott Douglas

Blaine County Title Mary & Willy Vanbragt

Jill & Fred Vogel Nancy & Thomas Wall

Lynne & Kenneth Weakley Beth & Paul Willis

Lisa & Michael Wolf Jill & Geoff Wood

Kathleen Wygle Kim Young & John Moragne

Cheryl & Peter Ziegler

#### Members of the Land Trust \$365 – \$999

Anonymous Margaret Anderson

Barbara & Chip Angle Colleen Baker

Jane F. Bestor Jill & Richard Blanchard

Kathleen & Hugh Blue Gregg E. Brandow

Frederic A. Brossy Jr. Cahail & Gregersen Charitable Fund

Barbara & Nat Campbell

Sue & Todd Carter  
 Claire Casey  
 Patrice & Mark Cole  
 Julie, Michael, Gardner & Lauren Cord  
 Patrick S. Cox  
 Dark to Light Productions  
 Candace & Tim Dee  
 Ross Dickinson  
 Marlene & John Durbin  
 Pam & Kirk Ebertz  
 The Edelbrock/Howland Charitable Fund at Spur Community Foundation  
 Ann & Mark Edlen  
 Damian & Charles Ellis  
 Earl & Sue Engelmann  
 Ellen & Joseph Fastow  
 Pam Feld  
 First Lite  
 Dr. Kenneth A. Fox  
 Robin & Lee Garwood  
 Barbara & Stephen Gerrish  
 Judy & Ernie Getto  
 Summer & Dan Gilmore \*  
 The Malcolm Gibbs Foundation  
 Larry Goldberg  
 Bart & Nancy Green  
 Sylvia & Ronald Hartman  
 Kitty Hillman  
 Harvey Hinman  
 Brandy & Michael Horwitz  
 Kathleen Hull  
 Wendy & Jim Jaquet  
 Kathy & Jerry Kavka  
 The Keck Family  
 Gloria Kimball & Bill Schliiter  
 Sandy & Tom Kling  
 Kristin & Zach Krahmer  
 John Kwan  
 Danielle Lewis  
 Karin Lindholm  
 Lost River Outfitters  
 The Mindbender Trust  
 Robert E & Jan Main  
 Pam Mann & Mark Miller  
 Katherine McGregor-Brown & Bernard Brown  
 Robin & Lance Meller  
 Holly Myers & Kirk Neely  
 Angie Rayborn & Joe Miczulski  
 Christie & Ed Moore  
 Carmen & Ed Northen  
 Kathy & Bobby Noyes  
 Sheron & Roger O'Connell  
 Vicki & Mark Overfelt  
 Diane Parish & Paul Gelburd  
 Jeremy Poynter  
 Patricia Radeke  
 Rees Family Fund  
 Renovatio Construction Services Inc.  
 Kathy & David Richmond  
 Rocky Mountain Environmental  
 Barbara & David Rognlien  
 Jaime & Chapman Root \*  
 Peggy Ann F. Rupp MD  
 Brigitte & Andy Russell  
 Pamela Sandine  
 Anita & Russell Satake

Phyllis & Leonard Schlessinger  
 The Shapiro Family Charitable Foundation  
 Alex Sliwinski  
 Richard Smooke  
 Lee Ann & Stephen Snyder  
 Mary & Jim Speck  
 Candice & Richard Stark  
 Janet & Allan Starr  
 Gretchen B Stengel  
 Megan & Justin Stevenson  
 Robert Symons Family Trust  
 Justin & Martial Thirsk  
 Gabrielle Tierney & Eric Bindelglass  
 Amy & Peter Toft  
 Amy Trujillo \*  
 Lois & Mark Ukropina  
 Katie Van Hees  
 Linda & Gary Vinagre  
 Diana & Karl Wadsack  
 Gay Weake & Jay Cassell  
 Holland Williams  
 Julie & Justin Wilson  
 Whitney Wright & Thomas Goetz  
 Julie & Tony Zanze

**Members of the Land Trust  
 \$120 – \$364**

Anonymous  
 Liz & Gary Allen  
 Mickey & Robert Angell  
 Rosemary Aquilante  
 James Arl  
 Ann & Joe Armstrong  
 Mary Arnold  
 Frank Batcha  
 Marlene & David Beach  
 Karen & David Beaudry  
 Dave Bell  
 Tom Bergin  
 Berkshire Hathaway  
 Elli & Jerald Bernacchi  
 Tom Berquist  
 Gloria & Carl Bianchi  
 Jennifer & Doug Biederbeck  
 Thomas D. Bigsby  
 Susan Bilkey  
 Jean & James Biondi  
 Margaret Bishop  
 Bowen Blair  
 Donald Boecker  
 Susan & Rudy Boesck  
 Gail Boettger  
 Shelly & Scott Boettger  
 Patricia Bolding  
 Sally Bones  
 Chris & Michael Boskin  
 Leisa & Kenneth Brait  
 David A. Bray  
 David F. Brown  
 Darlene & Max Burke  
 Karen & Franklin Burke  
 Steve Butler  
 Judy & Kevin Cahill  
 Steven Ching  
 Suzanne & Jock Christie  
 Lucy Chubb & Sean O'Connell

Penny & Buzz Coe  
 Linda & Leonard Cohen  
 Sue Conner & Sam Adicoff  
 Diane & Geoffrey Cordes  
 Patricia & Roy Crawford  
 Steve Crosser  
 Kathleen & Eric Cutter  
 Michelle & Spencer Cutter  
 Andrew D'Agostino \*  
 Sandy & Dan Dahl  
 Megan & Malcolm Daly  
 Elaine Daniel & Jim Bailey  
 Lesly & John Davenport  
 Jerre & Thomas Dawson  
 Peggy Dean  
 Kelly DiLorenzo  
 Cassie & Todd Dompier  
 Cindy & Steve Dondero  
 Patti & Jay Dorr  
 Elizabeth & Steven Durels  
 Kathleen Eder  
 Gadrie Edmunds & Dave Keir  
 Ernst Family  
 Cindy & Mike Fabian  
 Joyce Fabre & Craig Randle  
 Helga & Philip Fast  
 Mary & Daryl Fauth  
 James S. Feldbaum  
 Kelly & Richard Feldman  
 Nancy & Chuck Ferries  
 Laura Forbes-Carlin & Scott Carlin  
 Gay & Bill Fruehling  
 Susan & Whitney Ganz  
 Kathryn & Robert Gardner  
 Christina Gearin & Andy Mayo \*  
 Marlys & Leonard Gerber  
 Rob Gieselmann  
 Anne & Charles Gifford  
 Debbie & Bob Gilbert  
 Glenna Glover  
 Jennifer Green  
 Debbie & Steve Greenberg  
 Maureen Groper  
 Angie Grove  
 Karen Growney  
 Synneva Hagen-Lillevik & Paul Nicholson  
 Kay Hardy & Gregory Kaslo  
 Charlotta & Scott Harris  
 Judy & David Harrison  
 Hope Hayward & Walter Eisank  
 Patricia Healey  
 Lynne & Steve Heidel  
 Roberta & Tom Heinrich  
 Mary Hogan & Dennis Botkin  
 D.L. & J.K. Holman  
 Mark Howland  
 Carol & Bert Hughes  
 The Leslie and George Hume Fund  
 Kay Hummel & Jeff Fereday  
 David B. Hummon  
 Linda & Guy Hurlbutt  
 Klaus O. Huschke  
 Lindsey Jameson  
 Kristen Jarvis \*  
 Anne Jeffery & Jack Sept  
 Debbie & Jerry Johnson

Jan & Al Johnson & Ethel Bond  
 Katherine & McKay Johnson  
 Lia & Dale Johnson  
 Mary & Jim Jones  
 Vilma Keri & Ed Matthews  
 Kathryn Earhart & Mark Kieckbusch  
 Kimberly Morgan \*  
 Donna & Ronald Kleist  
 Claudia & Alex Klokke  
 Lee Koehmstedt  
 Dr. Britton & Margaret Kolar  
 Nancy & Peter Koury  
 Nancy Kroll  
 Jack Lane  
 Susan Larson, Matt Larson, & Gary Kuchcinski  
 Ann Leonardo  
 Marie Lerch  
 Sharon & Dick Linville  
 Lisa & Tom Lampl  
 Jeanne & Thomas Liston  
 Dean Litchfield  
 Karen Little  
 John Livingston  
 Elise B. Lufkin  
 Jane & John W. Lundin  
 Ann & Gregory Lyle  
 Helen & Robert Lynch  
 Mila & Marty Lyon  
 Kathleen & John MacMillan  
 Carole Mawson & Alan Hoffman  
 Mazzola Family Fund in the Idaho Community Foundation  
 Anita & Mike McCann  
 Jeanne McGinnis & Andy Chenoweth  
 Susan Mckee  
 Jill & Bruce McLean  
 Katrina & Joseph McNeal  
 Nancy Mendelsohn & Donald Ebbs \*  
 Sarah Michael & Bob Jonas  
 Charles Miller  
 Sally & John Morbeck  
 Karen Morrison  
 Mountain Wanderlust  
 Amber Mullen  
 Cynthia Murphy & James Wilson  
 MaryCarol Nelson \*  
 Paul Nicholson  
 Bridget Noonan  
 Louise & Jay Wilson Noyes  
 The Nurge Family  
 Griffin O'Neill  
 Abby & John Packer  
 Robert & John Prudden  
 Cheryl Parnell & Sam Dickerman  
 Lyndell & Michael Paul  
 Janice Payne  
 Diane & John Peavey  
 Wally Pereyra  
 Richard T. Peters  
 Andrea Pierceall  
 David B. Hummon  
 W. Jeffers Pickard  
 Kristy Pigeon & John Prudden  
 Sharon & Nick Purdy/Picabo Livestock Co., Inc.  
 Kathryn G. Reynolds  
 Karla & Alain Rinckwald

Beverley Robertson  
 Cheryl & Vern Rollin  
 Kate & Bob Rosso  
 Patricia Rothwell & Steve Knaup  
 Naomi & Scott Runkel  
 Jim Saiki  
 Carol Scheifele-Holmes & Ben Holmes  
 Larry Schoen  
 Jill Schwartz  
 Diane Scurlock & Kerry Sharp  
 Sarah Sentilles & Eric Toshalis  
 Sara & Clark Shafer  
 Sandra Shaw  
 Nancy & David J. Sheffner  
 Nancy & John Shepherd  
 Myla Sherburne  
 Natalie Shuttleworth  
 Mark Sindell  
 Linda Sisson  
 Sheri Slater  
 Becky & Pete Smith  
 Marilyn Smith  
 John Sofro  
 Renae Spaulding  
 Nina Steffens & Robert Brock  
 Michelle Stennett  
 Torrie & Steven Stokdyk  
 Helen Stone & Ben Schepps  
 Jan Swanberg & Ed Forman  
 Jill & Richard Taw  
 Alex & Ron Taylor  
 Kimm & David Terpening  
 Jenzi Thomas\*  
 Crystal Thurston & Ted Dale  
 Tracey Tomashpol  
 Dr. Lucy Tompkins & Dr. Stanley Falkow  
 Tricia Swartling  
 Mary & Robert Van Fossan  
 Jana Vosika  
 Brooks Walker  
 Daryl Walmer  
 Suzanne & Michael Walsh  
 Anne & Mike Weber  
 Christine & Paul Werner  
 Carolyn Wicklund  
 Peggy Wiley  
 Russell & Sharon Williams  
 Shirley & Peter Williams  
 Barbara Wilson & John E. Phillips  
 Amy & Jeremy Wintersteen  
 Priscilla & David Wyckoff

**Members of the Land Trust  
 Up to \$119**

Anonymous  
 Janet Abromeit & Brian Sturges  
 Jane Garnett Abraham & Marc Abraham  
 Patricia Adams  
 Martha Arvey  
 Jocelyn Aycrigg  
 Tawni Baker & Jamie Trevino  
 Kim Baltzell & John Maine  
 Alec Barfield  
 Susan Barney & David Markham  
 Laura Bernard & John Cvetich

Jennifer Bevers  
 Lisa & Paul Bodor  
 Win Bowron  
 Branching Out Nursery  
 Bags & Kerry Brokaw  
 John & Minette Broschofsky  
 Richard Burleigh  
 John Charney  
 Manuel David  
 Karin Davies  
 Adele Doneen  
 Maria Dudunakis & Jerry Boesel  
 Chris Dunn  
 Jamie & Jim Dutcher  
 Robin & Sam East  
 Lovina Englund  
 Gillian Enz  
 Camryn Ernst  
 Wendy Favinger  
 Renoir Finizio  
 Suzie & Jack Finney  
 Kristin Fletcher  
 Jeanne Flowers  
 Tom Frazer  
 Cecilia Freilich  
 Drs. Cathy & Scott Friedman  
 Myra Friedman & Ralph Fullerton  
 Manon Gaudreau  
 Sara Gemmell & Scott Gerrits  
 Christine & Robert Gertschen  
 Mat & Whit Gershater  
 Sara Donart Gorham  
 Harry & Michelle Griffith  
 Kathy Grotto  
 Kathleen Gundy  
 Brent & Sue Hansen  
 Nancy Harakay  
 Kathleen & Steven Harrison  
 Annie Heissenbuttel  
 Wendy & John Henning  
 Melanie & Wayne Herman  
 Carol & Don Hohl  
 Sharon & Dennis Hopwood  
 Sally Horn  
 J.B. Howard  
 Jyl Hoyt & Robert Vestal  
 Laura Hubbard & Lindy Cogan  
 Lois & Billy Hughes  
 Mollie Huppert  
 Barb & Dan Hurlbutt  
 Anne Jacob  
 Pam & Joel Jarolimek  
 Courtney & Ron Jelaco

Fran Jewell  
 Eleanor Jewett & Eric Rogers  
 Bobbie Jordan  
 Jaime Jovanovich-Walker  
 Don & Chris Keirn  
 Adam Kesselman  
 Elissa Kline  
 Robert Korb  
 Shari & Kyle Kunz  
 Kathryn & Kyle Livingston \*  
 Loren Lombard  
 Amy & Lance Long  
 Mary & Marc Longley  
 Kathryn Lopez  
 Matt Lucia  
 Jan & Paul MacGregor  
 Allie, Ben & Hayes Majsterek  
 Shelley Majsterek  
 Robert Mann  
 Heidi Marcus & Jason Blamiers\*  
 Rosemarie & David Marshall  
 Jan & Steven Marx  
 Susan Matsuura  
 Jori McCune  
 Mikie McDonnell  
 Nancy Mendelson\*  
 Andrew Moffat  
 Jennifer Montgomery  
 Nancy & Marr Mullen  
 Cynthia & Kingsley Murphy  
 Paula & Terry Neff  
 Bruce Norvell  
 Nina & Wayne Orvik  
 Cheryl Parker-Graham & C. Marshall Graham  
 Roxanna & Mark Parker  
 Susan Parslow  
 Mark Pawlosky  
 Sue, Sean, & Mark Petersen  
 Evelyn & James Phillips  
 Peter Pressley  
 Pam & Steve Rayborn  
 Paige & Ryan Redman  
 Joan Reynolds Sweet Clover School  
 Jim Rineholt  
 DeAnn Robb  
 Shelby E. Roberts  
 Michael Robinson  
 Ronile & Leroy Robinson  
 Sam Rogers  
 Candace & Justin Rose  
 Char Roth  
 Tamara Rowe

Maureen Ryan  
 Deb & Rob Santa  
 Ripley & Daisy Scales  
 Albie Schemel  
 Doro Schinella  
 Maureen Schmutzler  
 Martha & Ted Schwerdtle  
 Sandy Scott  
 Cynthia Shearstone  
 Leslie & Tim Silva  
 Brittany Skelton  
 Brandee & Adam Smith  
 Kathryn & Tim Smith  
 Holly Smithey  
 Randy Smithey  
 James Steel  
 Diane Steffey Smith  
 Sharon & Gene Steiner  
 Betty & Robert Stone  
 Nik Strong-Cvetich  
 Tom Stuart  
 Laura & Michael Targett  
 Jeremy Thomas  
 Nancy & John Thomas  
 Pamela & Denis Thomas  
 Christine & Lewis Tripp  
 Kristin Turco  
 Sandi Viau  
 George Wade  
 Gay Walker  
 Kathy Walker  
 Marvin Weber  
 Sam Whalen  
 Anne Marie & Peter Wick  
 Susan Woodruff  
 Sue Woodyard  
 Rebecca & Richard Worst  
 Debra Yoder & Gary Hohl  
 Keri York

\* Recurring gifts

We do our best to accurately acknowledge gifts. Please email [info@woodriverlandtrust.org](mailto:info@woodriverlandtrust.org) with any errors or omissions so we can correct our records.





119 E. Bullion Street  
Hailey, Idaho 83333  
[www.woodriverlandtrust.org](http://www.woodriverlandtrust.org)

*Wood River Land Trust is a 501(c)(3) organization (Tax ID: 82-0474191). Contributions are tax deductible as allowed by law. Public financial information is available by contacting our office.*



NON PROFIT  
ORGANIZATION  
U.S. POSTAGE  
**PAID**  
ACMS



### Did You Know...

Noxious weeds threaten biodiversity because they crowd out native plants. To find out how you can help control the threat of noxious weeds, visit the Blaine County Cooperative Weed Management Area website



This Spring, Wood River High School Senior Piper Green joined the River Program for an 8 week internship. Piper took the time to share her experience as a Wood River Land Trust intern. Scan the QR code to read the full interview:

